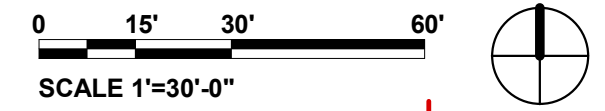
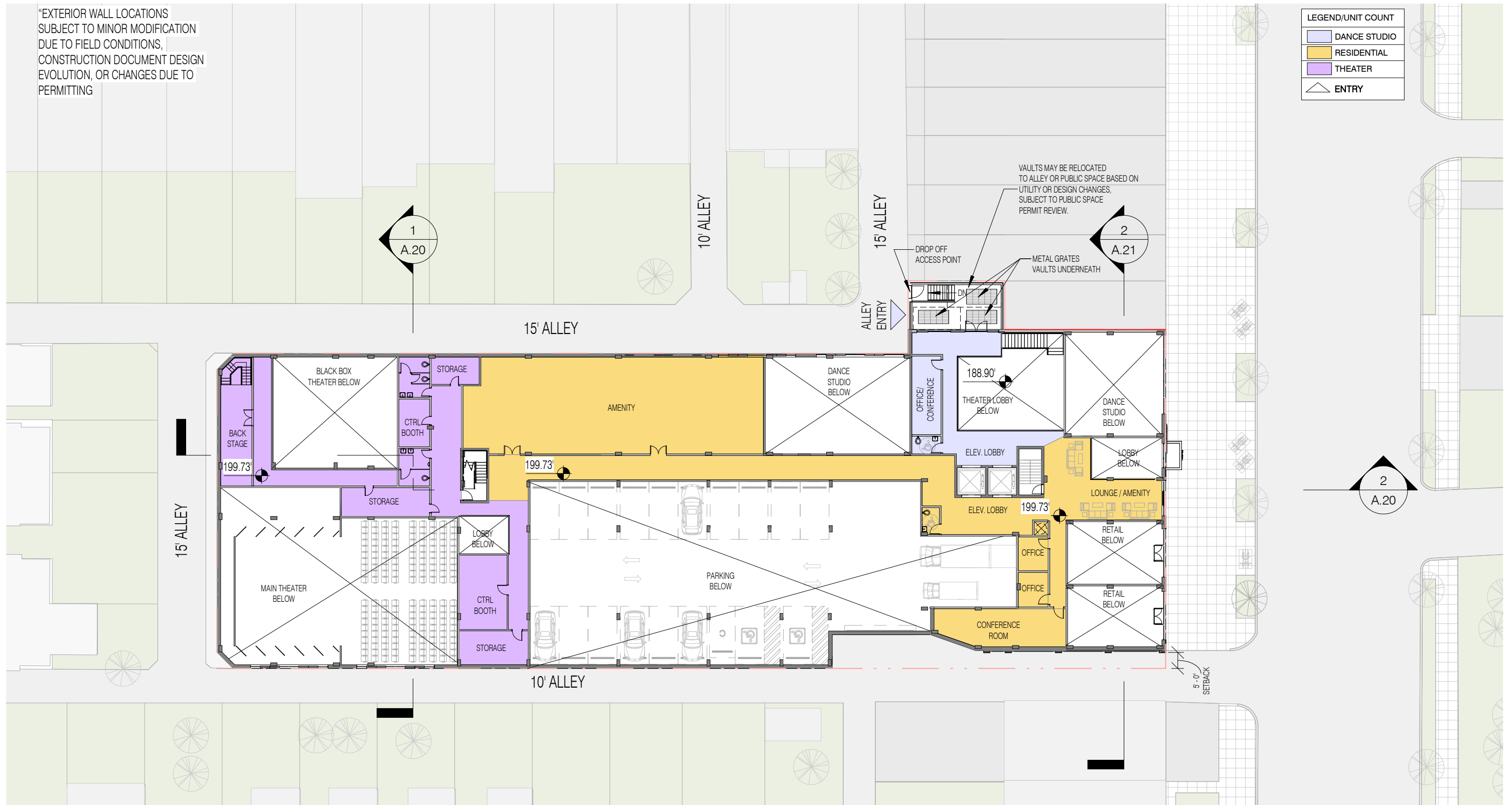


\*EXTERIOR WALL LOCATIONS  
SUBJECT TO MINOR MODIFICATION  
DUE TO FIELD CONDITIONS,  
CONSTRUCTION DOCUMENT DESIGN  
EVOLUTION, OR CHANGES DUE TO  
PERMITTING

LEGEND/UNIT COUNT	
	DANCE STUDIO
	RESIDENTIAL
	THEATER
	ENTRY

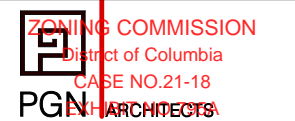


4618 14TH STREET, NW

DANCE MEZZANINE A.11

COPYRIGHT © 2017 PGN ARCHITECTS, PLLC

05/16/2022



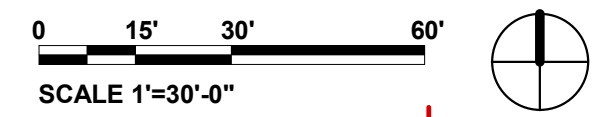




LEGEND/UNIT COUNT	
1BD	8
2BD	5
AMENITY	1
<b>TOTAL</b>	<b>13</b>

4618 14TH STREET, NW

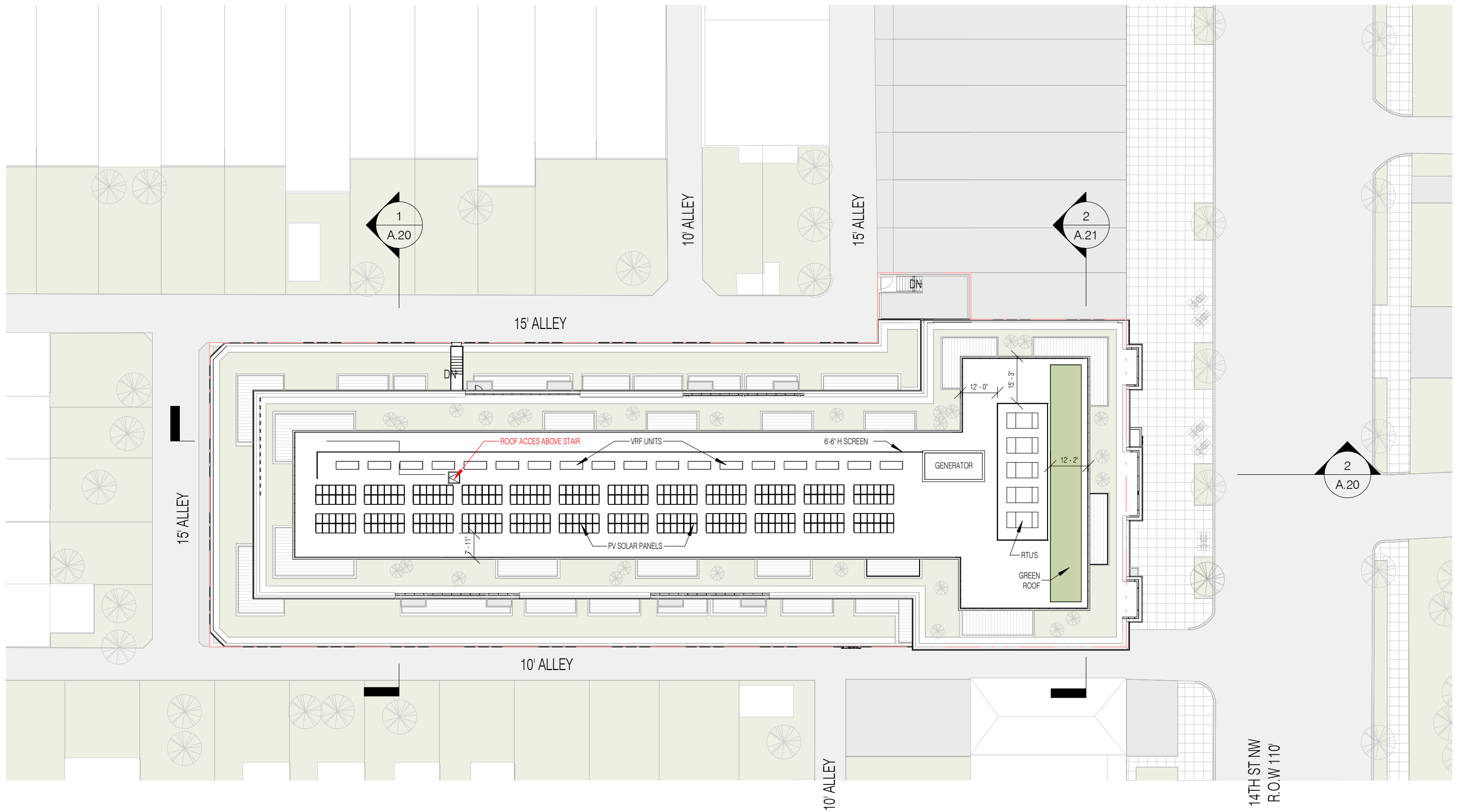
COPYRIGHT © 2017 PGN ARCHITECTS, PLLC



PENTHOUSE FLOOR PLAN | A.16

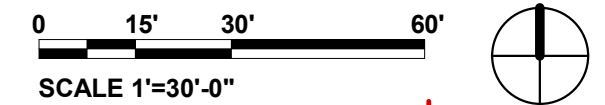
05/16/2022





4618 14TH STREET, NW

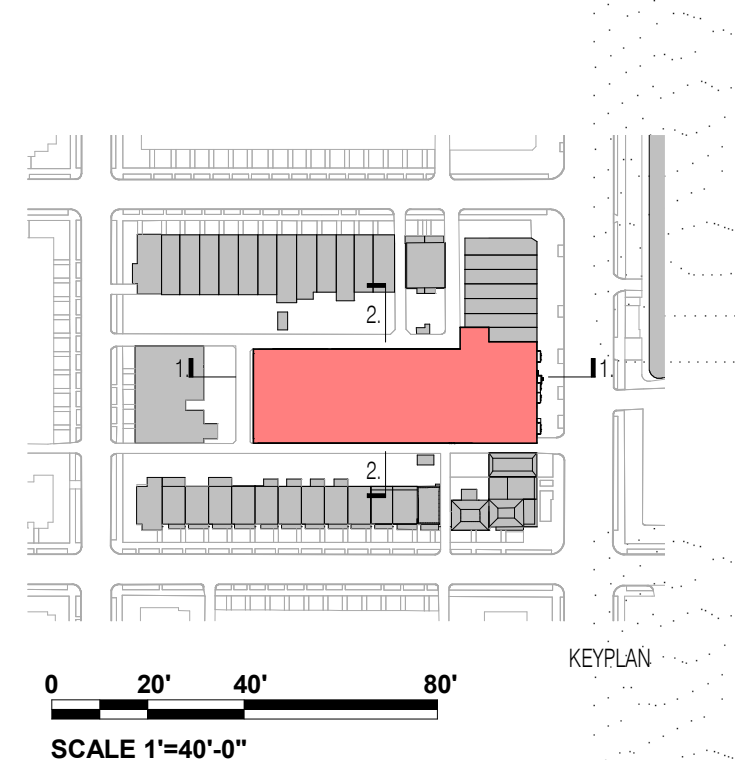
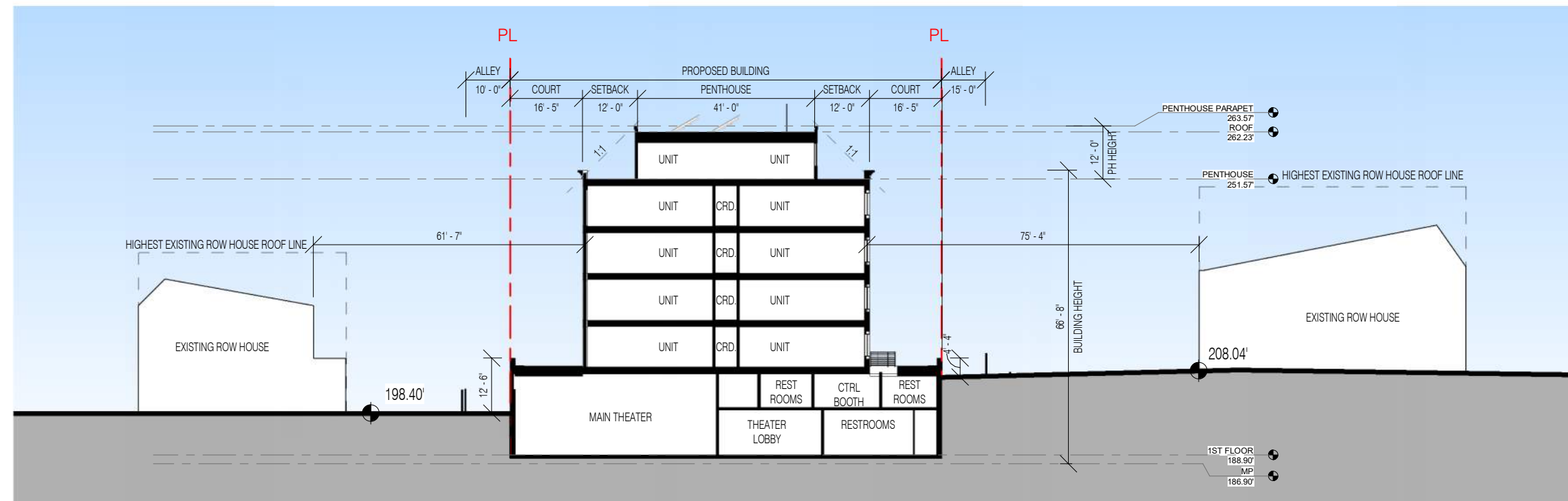
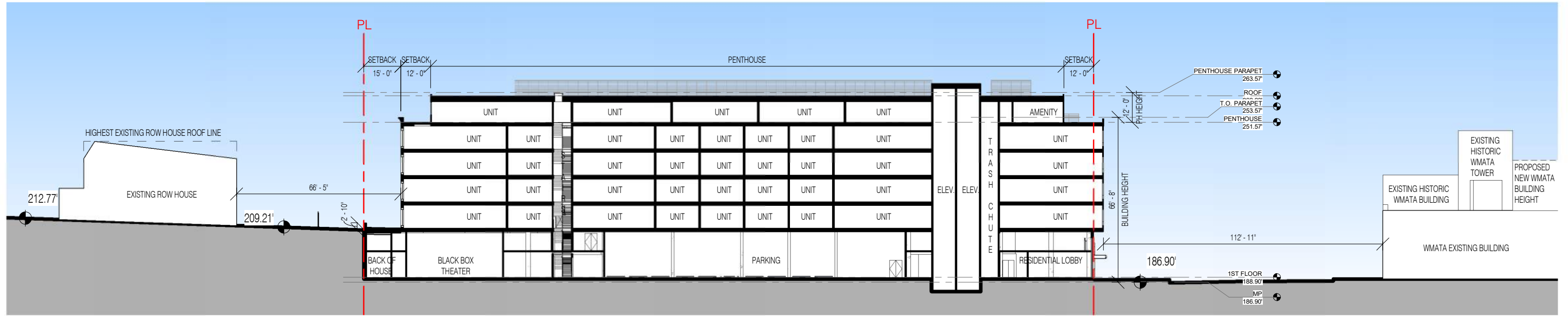
COPYRIGHT © 2017 PGN ARCHITECTS, PLLC



ROOF PLAN | A.17

05/16/2022





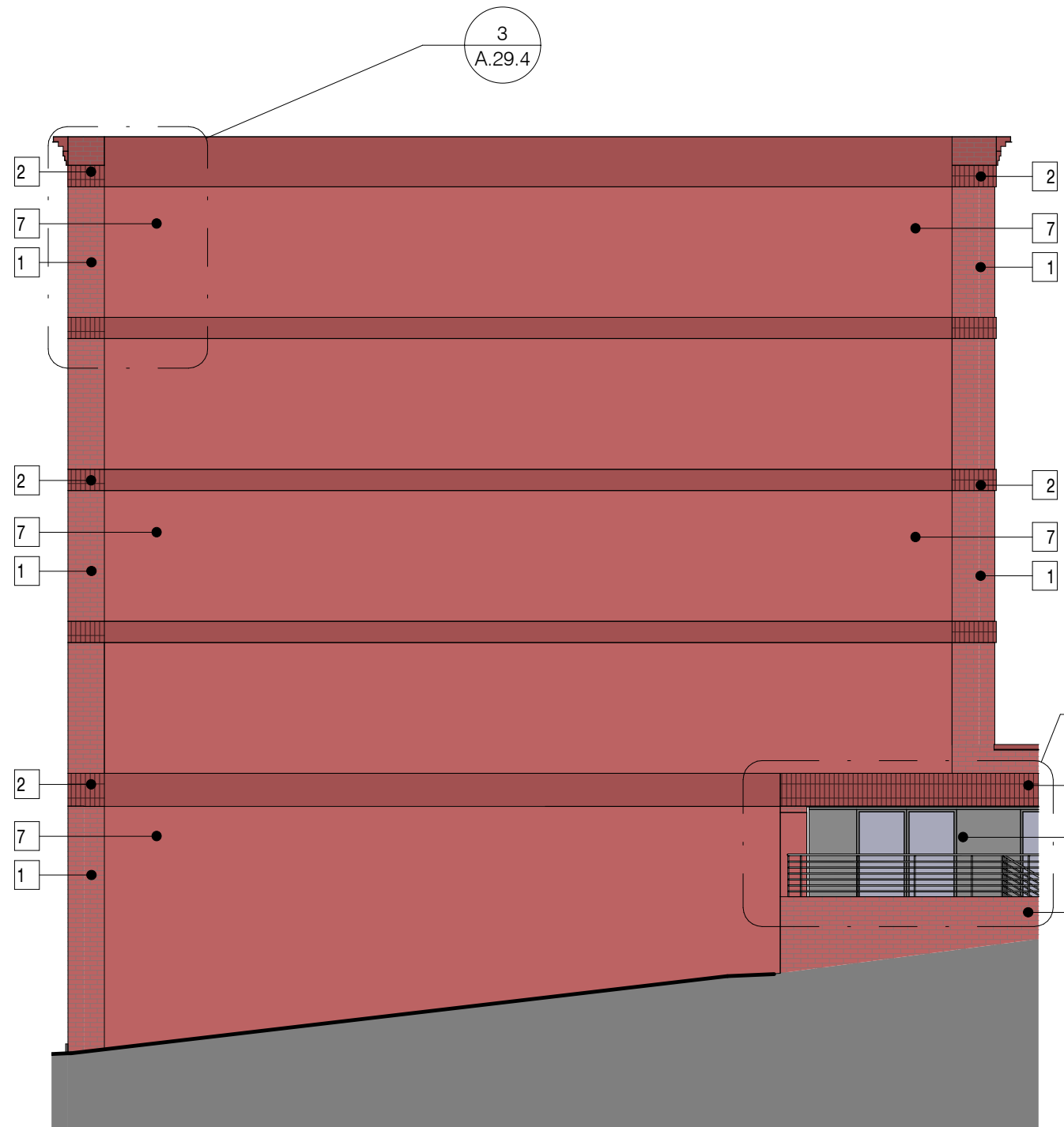
4618 14TH STREET, NW

COPYRIGHT © 2017 PGN ARCHITECTS, PLLC

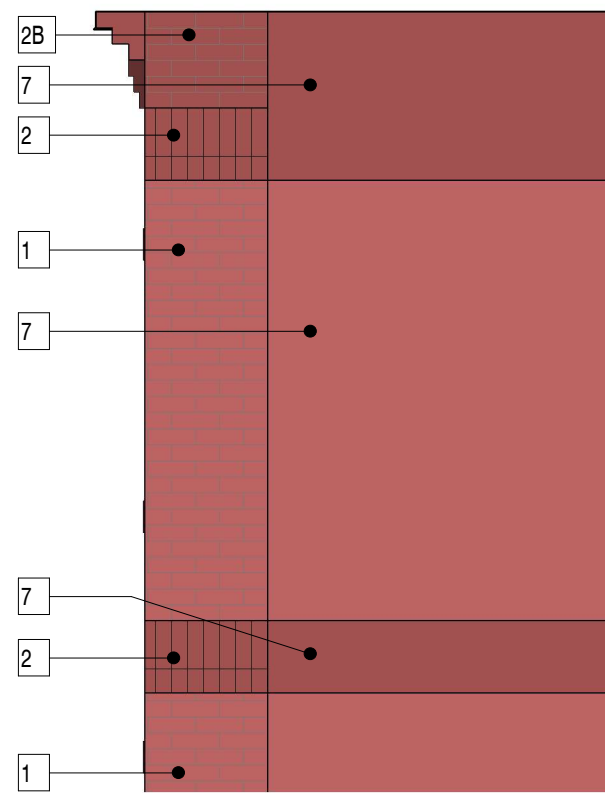
SITE SECTIONS A.23.1

05/26/2022





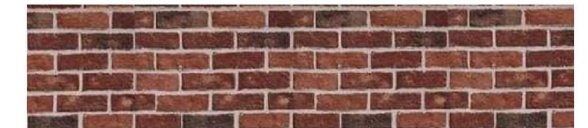
1. PARTIAL ELEVATION



2. DETAIL



3. DETAIL



1. UTILITY SIZE RED BRICK



2. CLOSURE RED BRICK - SOLDIER COURSE

2A. CLOSURE RED BRICK - BRACKETS

2B. RUNNING BOND - SAME ACCENT COLOR



3. CEMENTITIOUS PANELS - GREY



7. EIFS TO MATCH ADJACENT BRICK



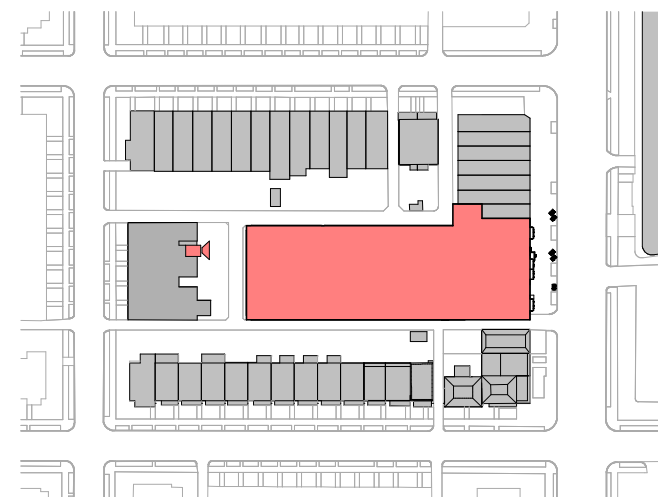


EXISTING



PROPOSED

PHOTOGRAPHS ARE FROM FOFS PRESENTATION,  
FILED MAY 11, 2022 AT EXHIBIT 788A



KEYPLAN

4618 14TH STREET, NW

COPYRIGHT © 2017 PGN ARCHITECTS, PLLC

BACKYARD VIEW NORTH | A.40.1

05/26/2022





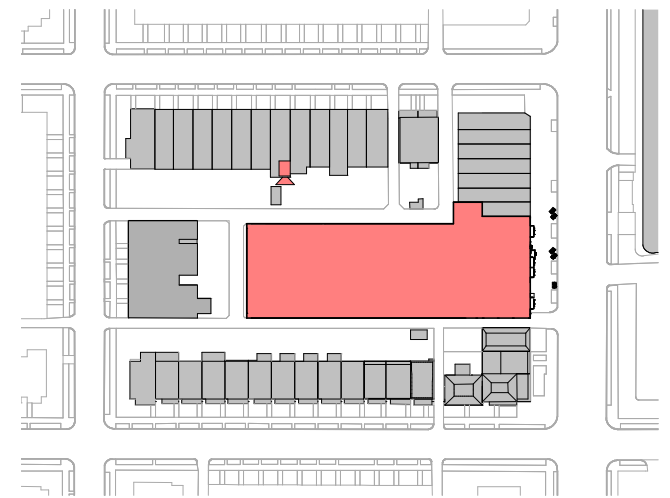


EXISTING



PROPOSED

PHOTOGRAPHS ARE FROM FOFS PRESENTATION,  
FILED MAY 11, 2022 AT EXHIBIT 788A



KEYPLAN





EXISTING



PROPOSED

PHOTOGRAPHS ARE FROM FOFS PRESENTATION,  
FILED MAY 11, 2022 AT EXHIBIT 788A



KEYPLAN

4618 14TH STREET, NW

COPYRIGHT © 2017 PGN ARCHITECTS, PLLC

BACKYARD VIEW WEST | A.40.3

05/26/2022



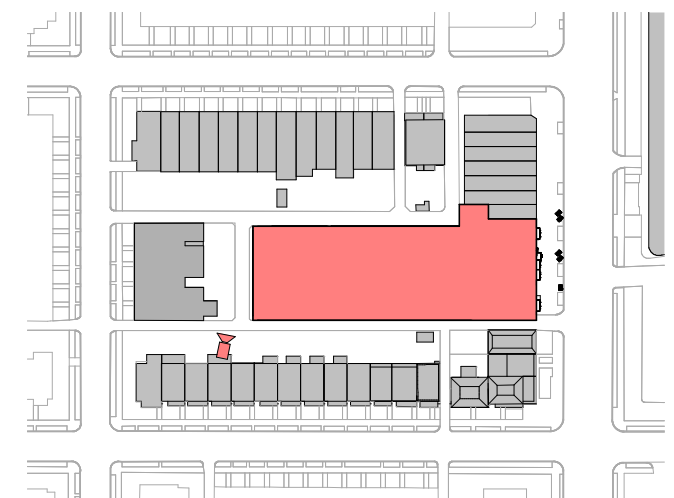




EXISTING



PROPOSED



KEYPLAN

PHOTOGRAPHS ARE FROM FOFS PRESENTATION,  
FILED MAY 11, 2022 AT EXHIBIT 788A

4618 14TH STREET, NW

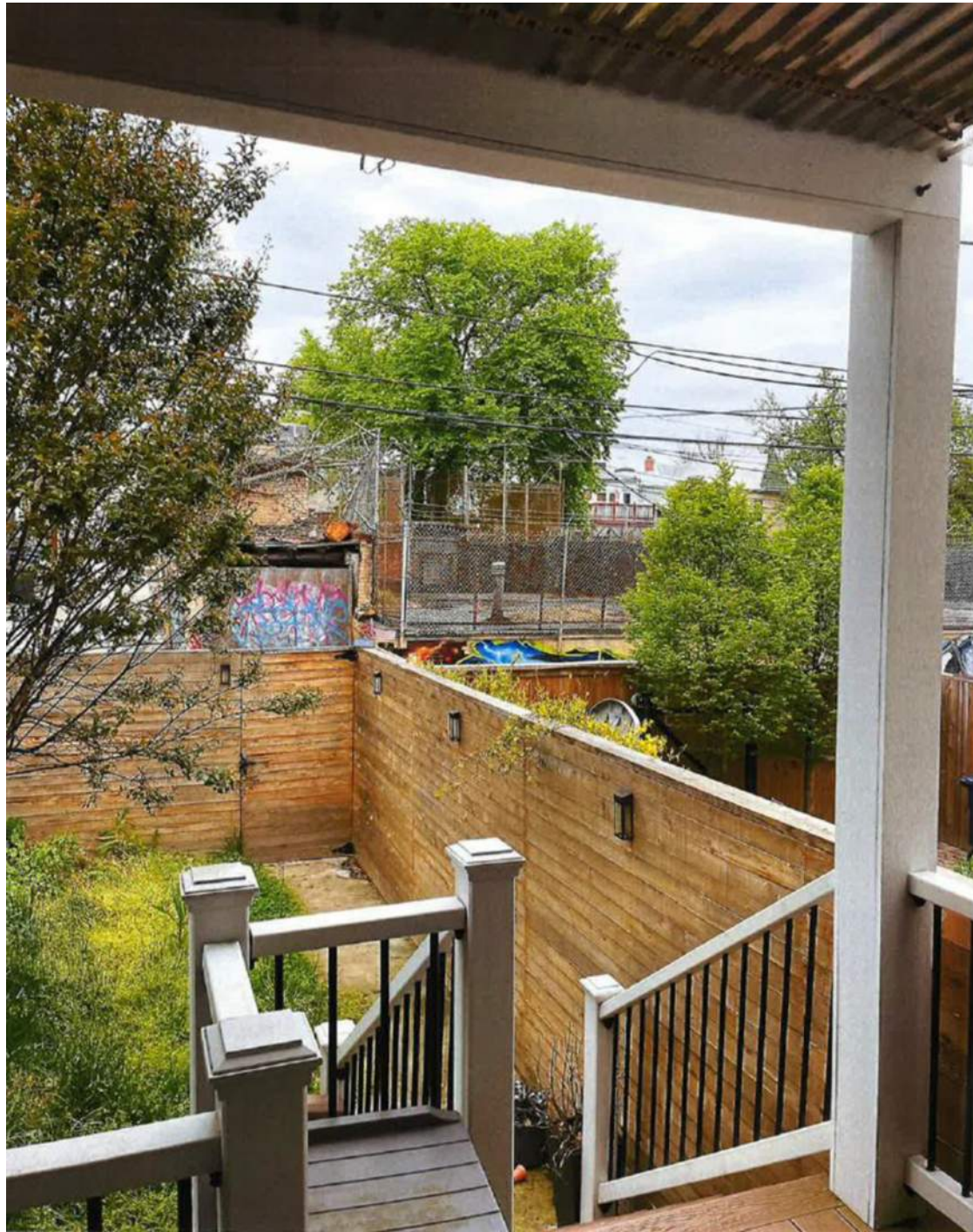
COPYRIGHT © 2017 PGN ARCHITECTS, PLLC

BACKYARD VIEW SW | A.40.4

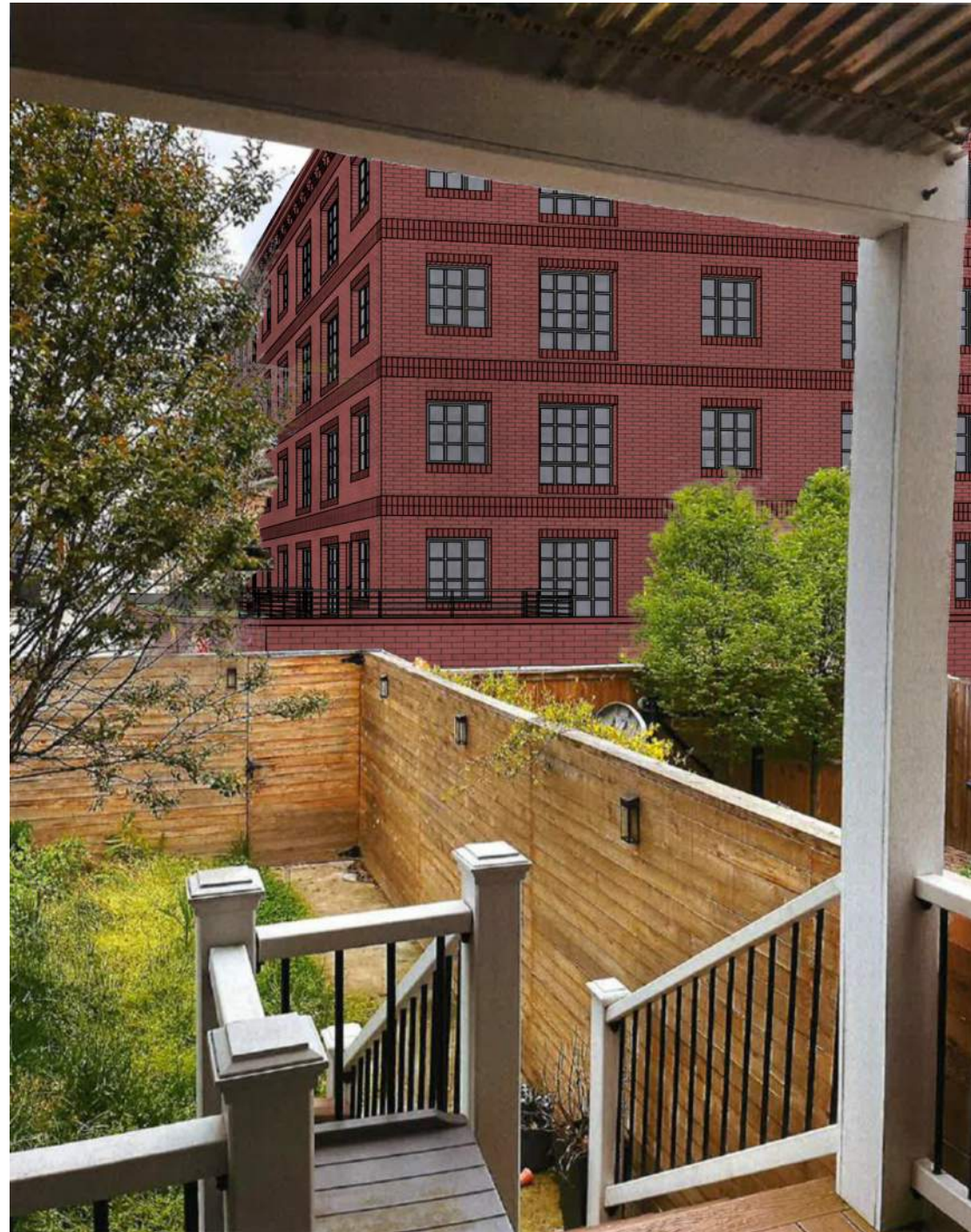
05/26/2022





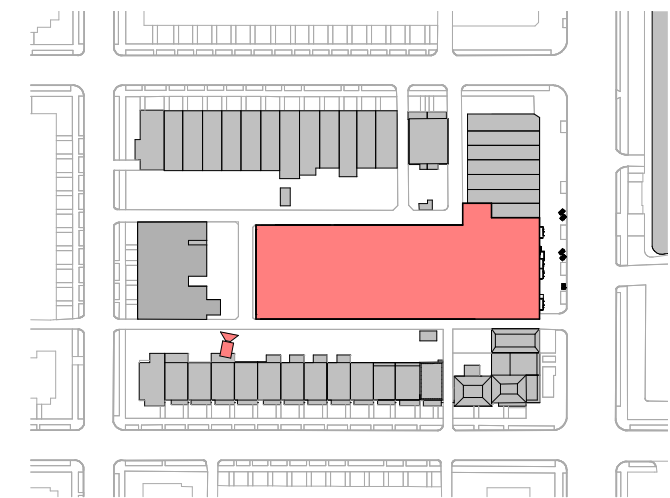


EXISTING



PROPOSED

PHOTOGRAPHS ARE FROM FOFS PRESENTATION,  
FILED MAY 11, 2022 AT EXHIBIT 788A





## SUNVENT CONNECTOR VENTS



### EXCLUSIVE FEATURES

- Available in any special size to suit any job design
- Clear Anodized finish standard with Custom colors available
- **Vent:** Min .125" thick extruded aluminum sections; 1" deep overlapping blade set at 45° angle; continuous weepage along bottom
- **Transition Box:** Famco 28 ga Galvanized steel, with divider between damper portion and adjacent section
- **Damper:** Deflect-o Model BD04; White, Calcium filled Polypropylene, with a melting point of 325°

COLOR TO MATCH ADJACENT MATERIAL



# Product Data

Dimensions, Technical Information and Performance Specification

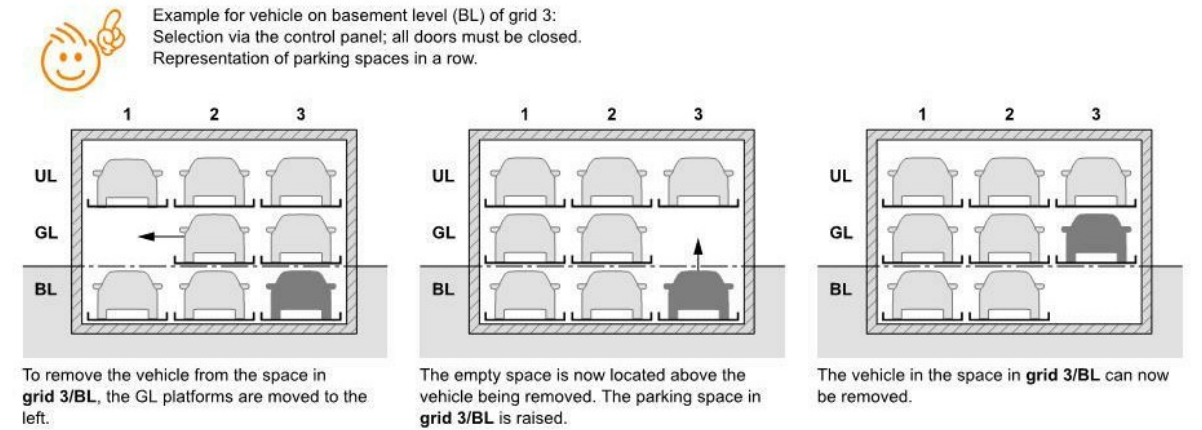
## Contents

Symbols.....	2	Loading schedule.....	7
Function diagram with standard designation.....	2	Entrance inclination.....	8
Dimensional specifications & tolerances.....	2	Clearances for installations.....	8
Overview of building design.....	3	Electrical installation.....	8
Vehicle data.....	3	Technical information.....	9
Overview of system types & ceiling heights.....	4	Performance specification.....	10
Width and door height.....	5	Performances provided by customer.....	12
Configuration with vertical door.....	5	Right to technical changes reserved.....	12
Configuration with sliding door.....	6		

## Symbols

- Platforms accessible horizontally.
- Maximum load per parking space in lbs.  
Upweights above 4400 lbs possible with surcharge (see "Vehicle data", page 3).
- Parking space load can be subsequently upweighted (see "Vehicle data", page 3).
- Driven-through arrangement and can be combined with other TrendVario systems as a KombiSystem.
- The quoted systems correspond to DIN EN 14010 and EU Machinery Directive 2006/42/EC.  
In addition, this system has undergone a voluntary conformity test by TÜV SÜD.

## Function diagram with standard designation



## Dimensional specifications & tolerances

- All structural dimensions are minimum finished dimensions.  
Tolerance for structural dimensions: +1.2/-0". Dimensions in inches (in).  
The tolerances specified in the German Construction Contract Procedures (VOB), Part C (DIN 18330 and 18331) as well as DIN 18202 must also be taken into account in order to adhere to the minimum finish dimensions.



trendvario 6300



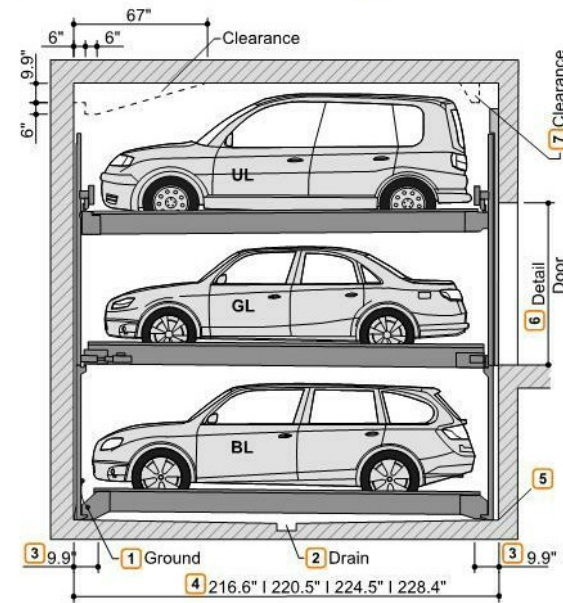
4618 14TH STREET, NW

[multiparkingusa.com](http://multiparkingusa.com)



**Overview of building design**

**Building configuration with vertical door**



- Equipotential bonding from the foundation ground connection to the system (provided by customer).
- Slope with water collection channel (see "Drainage", page 12).
- These areas must be horizontal and on the same level in the entire pit.
- 216.6" for vehicles up to 196.9" in length
  - 220.5" for vehicles up to 200.8" in length
  - 224.5" for vehicles up to 204.8" in length
  - 228.4" for vehicles up to 208.7" in length
 Shorter designs possible upon request. Observe local regulations for parking space length!  
 So that you can conveniently use your parking space and due to the ever increasing length of vehicles, we recommend a pit length of at least 224.5".
- Grooves/concrete haunches are not possible at the transition from the pit floor and the walls. If grooves/concrete haunches are required, then the system must be narrower or the pits wider.
- Detail of door and additional door variants (see "Configuration with vertical door", page 5 and see "Configuration with sliding door", page 6).



If sprinklers are required, the customer must leave sufficient clearance during the construction phase.

**Vehicle data**

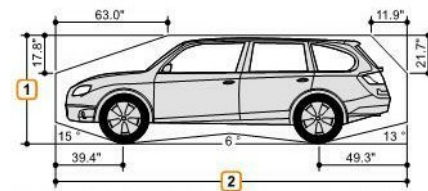
**Parking options**

Production vehicles:  
Sedan, station wagon, SUV, and van as per clearance gauge and maximum parking space load.

	UL   GL   BL		
<b>Weight</b>	4400 lbs	5720 lbs	6600 lbs
<b>Wheel load</b>	1100 lbs	1430 lbs	1650 lbs

- Vehicle height (see "Overview of system types & ceiling heights", page 4)
- Vehicle length (see "Overview of building design", page 3)
- UL = upper level | GL = ground level | BL = basement level
- Individual parking spaces can also be subsequently upweighted to 6,600 lbs.

**Clearance gauge**

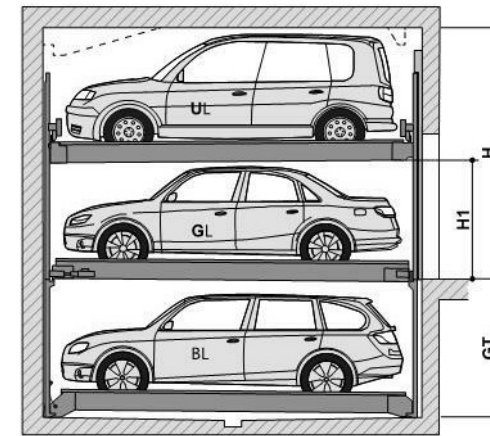


Vehicle width of 74.9" with a platform width of 90.6".  
Wider platforms allow correspondingly wider vehicles to be parked.

**Overview of system types & ceiling heights**



The permissible GL vehicle height must be greater than or equal to the BL vehicle height.



GT: Pit depth H: Building height H1: Headroom

Type	GT	BL vehicle height
6300 / 175	68.9"	59.1"
6300 / 180	70.9"	61.1"
6300 / 185	72.9"	63.0"
6300 / 190	74.9"	65.0"
6300 / 195	76.8"	67.0"
6300 / 200	78.8"	68.9"
6300 / 205	80.8"	70.9"
6300 / 210	82.7"	72.9"
6300 / 215	84.7"	74.9"
6300 / 220	86.7"	76.8"
6300 / 225	88.6"	78.8"
6300 / 230	90.6"	80.8"
6300 / 235	92.6"	82.7"
6300 / 240	94.5"	84.7"

H1	GL vehicle height	UL vehicle height															
		59.1"	61.1"	63.0"	65.0"	67.0"	68.9"	70.9"	72.9"	74.9"	76.8"	78.8"	80.8"	82.7"	84.7"	86.7"	
61.1"	59.1"	128.0	130.0	131.9	133.9	135.9	137.8	139.8	141.8	143.8	145.7	147.7	149.7	151.6	153.6	155.6	
63.0"	61.1"	130.0	131.9	133.9	135.9	137.8	139.8	141.8	143.8	145.7	147.7	149.7	151.6	153.6	155.6	157.5	
65.0"	63.0"	131.9	133.9	135.9	137.8	139.8	141.8	143.8	145.7	147.7	149.7	151.6	153.6	155.6	157.5	159.5	
67.0"	65.0"	133.9	135.9	137.8	139.8	141.8	143.8	145.7	147.7	149.7	151.6	153.6	155.6	157.5	159.5	161.5	
68.9"	67.0"	135.9	137.8	139.8	141.8	143.8	145.7	147.7	149.7	151.6	153.6	155.6	157.5	159.5	161.5	163.4	
70.9"	68.9"	137.8	139.8	141.8	143.8	145.7	147.7	149.7	151.6	153.6	155.6	157.5	159.5	161.5	163.4	165.4	
72.9"	70.9"	139.8	141.8	143.8	145.7	147.7	149.7	151.6	153.6	155.6	157.5	159.5	161.5	163.4	165.4	167.4	
74.9"	72.9"	141.8	143.8	145.7	147.7	149.7	151.6	153.6	155.6	157.5	159.5	161.5	163.4	165.4	167.4	169.3	
76.8"	74.9"	143.8	145.7	147.7	149.7	151.6	153.6	155.6	157.5	159.5	161.5	163.4	165.4	167.4	169.3	171.3	
78.8"	76.8"	145.7	147.7	149.7	151.6	153.6	155.6	157.5	159.5	161.5	163.4	165.4	167.4	169.3	171.3	173.3	
80.8"	78.8"	147.7	149.7	151.6	153.6	155.6	157.5	159.5	161.5	163.4	165.4	167.4	169.3	171.3	173.3	175.2	
82.7"	80.8"	149.7	151.6	153.6	155.6	157.5	159.5	161.5	163.4	165.4	167.4	169.3	171.3	173.3	175.2	177.2	
84.7"	82.7"	151.6	153.6	155.6	157.5	159.5	161.5	163.4	165.4	167.4	169.3	171.3	173.3	175.2	177.2	179.2	
86.7"	84.7"	153.6	155.6	157.5	159.5	161.5	163.4	165.4	167.4	169.3	171.3	173.3	175.2	177.2	179.2	181.2	

**Configuration example**

**Example configuration 1:**

UL vehicle:	59.1"	▶	Type: 6300 / 200 - 195 Height: 143.8"
GL vehicle:	74.9"		
BL vehicle:	68.9"		

**Example configuration 2:**

UL vehicle:	63"	▶	Type: 6300 / 205 - 165 Height: Selection not possible!
GL vehicle:	63.0"		
BL vehicle:	70.9"		



Configuration 2 is not possible as the maximum permissible vehicle on GL is smaller than the vehicle on BL. As such, the larger BL vehicle cannot drive in.